

<http://www.mass.gov/hqcc/docs/meetings/20080917-website-summary.ppt>

Website Display of Summary Ratings

John Freedman

HCQCC

September 15, 2008

Acknowledgements

- Linda Green, Marj Radin and their colleagues in the DHCFP
- Young Joo, HCQCC policy intern
- Afsana Akhter & Medullan

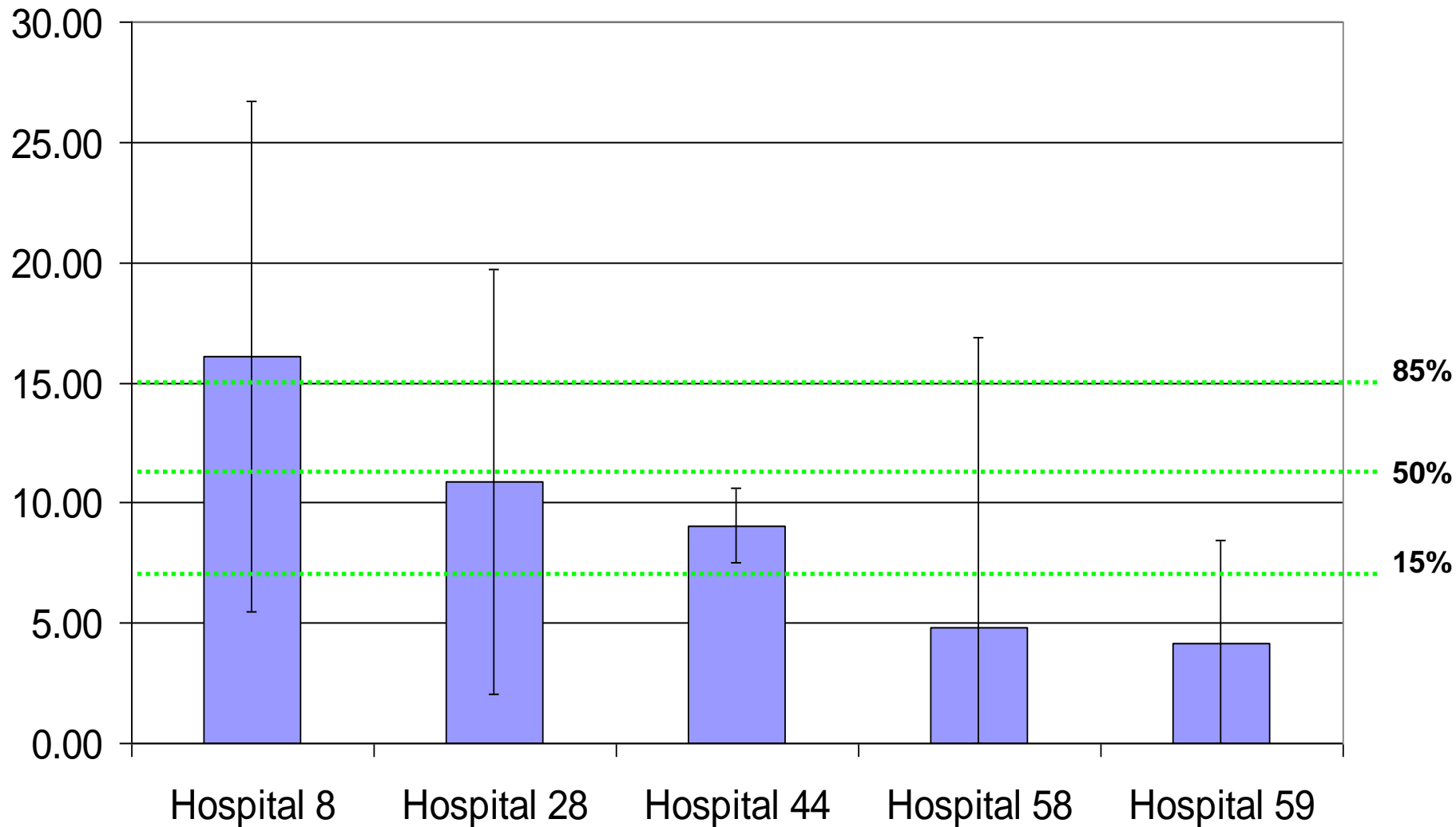
Review

- Many options exist for summary data display
- Summary, or simplified, display intended to ensure information is understandable to average consumer
- Interest by Council in reducing risk of misclassification
 - By reducing the number of rating categories
 - By applying a statistical comparison

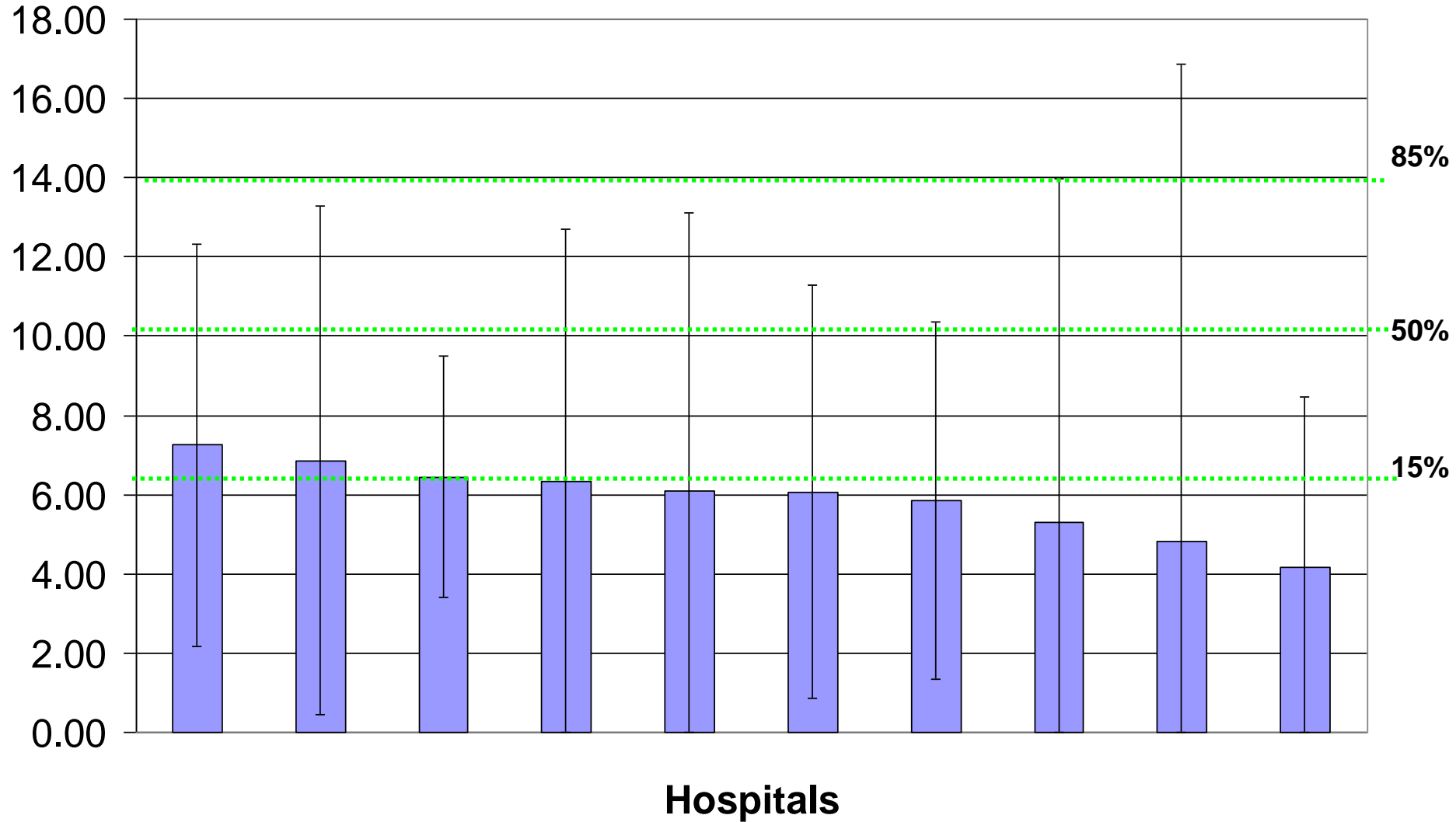
Review

- Communication & Transparency Committee reviewed 4 specific options, using actual data:
 - Option 1 – 4 categories based on percentile ranking (15th/50th/85th percentiles as dividing points)
 - Option 2 – 3 categories based on percentile ranking (15th/85th percentiles as dividing points)
 - Option 3 – 3 categories based on 95% confidence intervals
 - Option 4 – 3 categories based on 68% confidence intervals (equal to 1 standard deviation)

Example: Issues of Percentile Rank vs. Confidence Intervals (for Stroke Mortality)



Top 10 Hospitals for Stroke Mortality with 95% confidence intervals



Respiratory: Pneumonia

Option 3: 95% CI

	Hospital 21	Hospital 22	Hospital 38	Hospital 42	State Wide
95% CI	☆☆	☆	☆☆☆	☆☆	
Provided Recommended Care (higher is better)	88.1%	88.4%	92.3%	92.5%	90.4%
Volume	407	2049	1557	1081	

Hybrid Option 2: 15/85 with 95% CI

	Hospital 21	Hospital 22	Hospital 38	Hospital 42	State Wide
15/85	☆☆	☆☆	☆☆	☆☆	
Statistical Significance		↓	↑		
Provided Recommended Care (higher is better)	88.1%	88.4%	92.3%	92.5%	90.4%

Hybrid Option 1: 15/50/85 with 95% CI

	Hospital 21	Hospital 22	Hospital 38	Hospital 42	State Wide
15/50/85	☆☆	☆☆	☆☆☆	☆☆☆	
Statistical Significance		↓	↑		
Provided Recommended Care (higher is better)	88.1%	88.4%	92.3%	92.5%	90.4%

Approved by Committee

Recommendation: Hybrid Method

Display both percentiles and statistical significance based on 95% CI

- Easy to understand; intuitive for non-statisticians
- Maintains rank order
- Mitigates effects of small differences between hospitals
- Allows for indication of statistical significance
- Less discrimination between large and small hospitals

Recommendations

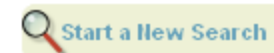
Quality Measure	Hybrid: Percentile Stars + CI Indicator	Percentile Stars only (CI not available)	Do not display summary rating
<ul style="list-style-type: none"> •Stroke & Hip Fx mortality •Hospital Compare (AMI, CHF, Pneumonia) •Leapfrog Patient Safety Practices 	X		
<ul style="list-style-type: none"> •Heart Valve & Wt. Loss Surgery (Leapfrog) •Hospital Compare (Patient Experience) 		X	
<ul style="list-style-type: none"> •Mass-DAC (Bypass & Angioplasty) •Hip Replacement Mortality 			X

What Will It Look Like?

Most Recent Website Displays

- Hospital Comparison Reports
 - Summary View (Stars, Dollars)
 - Detailed View (Actual Measures/Values)
- Single Hospital Reports
 - Summary View (Stars, Dollars)
 - Detailed View (Actual Measures/Values)

Comparison of Providers



Summary Information

- About the Provider
- Patient Safety
- Patient Experience
- Surgical Safety

Heart Care

- Angioplasty
- Bypass Surgery
- Cardiac Valve Surgery
- Heart Attack
- Heart Failure
- Stroke

Digestive System

- Gall Bladder
- Intestinal Surgery
- Weight-loss Surgery

Joint Care

- Back Procedure
- Hip Fracture
- Hip Replacement
- Knee Replacement

Heart Care: Angioplasty

Quality and cost of angioplasty varies by hospital. The reason to know about this is that someday you, or someone you care about, may need to decide which hospital to go to for angioplasty. You can make a more informed choice when you know about quality and cost and then discuss this with your doctor. [\(more\)](#)

Diagnostic classification: Percutaneous cardiovascular proc without ami, heart failure or shock (APR-DRG 175)

Quality of Care [\(show detail\)](#)

Delta Community Hospital	Echo Teaching Hospital	Golf Ambulatory Care Center	Kilo Emergency Clinic	Lima Medical Center
★★★★★	★★★	★	★★★★	★★★★★

Legend:

- ★ Hospitals have a mortality rate in the bottom 15%. Their mortality rate is worse than 85% of all hospitals in the state.
- ★★ Hospitals are below average, but not in bottom 15%. Their mortality rate is above 15% but below 50% of all hospitals in the state.
- ★★★ Hospitals perform better than average but are not in the top 15%. Their mortality rate is above 50% but below 85% of all hospitals in the state.
- ★★★★ Hospitals have a mortality rate in the top 15%. Their mortality rate is better than 85% of all hospitals in the state.
- N/A Not enough information was reported

Cost of Care [\(show detail\)](#)

Delta Community Hospital	Echo Teaching Hospital	Golf Ambulatory Care Center	Kilo Emergency Clinic	Lima Medical Center
\$	\$\$\$\$	\$\$\$	\$\$	\$\$\$\$

Rankings based on median amount paid per patient, adjusted for severity of patient illness

Legend:

- \$ The hospital is among the least costly. This cost is lower than 85% of all hospitals in the state.
- \$\$ The hospital cost is below average. This cost is above 15% but below 50% of all hospitals in the state.
- \$\$\$ The hospital cost is above average. This cost is above 50% but below 85% of all hospitals in the state.
- \$\$\$\$ The hospital is among the most costly. This cost is higher than 85% of all hospitals in the state.



Comparison of Providers



Summary Information

[About the Provider](#)

[Patient Safety](#)

[Patient Experience](#)

Heart Care

[Heart Attack](#)

[Heart Failure](#)

[Stroke](#)

Joint Care

[Hip Fracture](#)

[Hip Replacement](#)

[Knee Replacement](#)

Heart Care: Angioplasty

Quality and cost of angioplasty varies by hospital. The reason to know about this is that someday you, or someone you care about, may need to decide which hospital to go to for angioplasty. You can make a more informed choice when you know about quality and cost and then discuss this with your doctor. [\(more\)](#)

Diagnostic classification: Percutaneous cardiovascular proc without ami, heart failure or shock (APR-DRG 175)

Quality of Care [\(hide detail\)](#)

	Delta Community Hospital	Echo Teaching Hospital	Golf Ambulatory Care Center	Kilo Emergency Clinic	Lima Medical Center	State-wide Average
Death rate (lower is better)	0.7	1.1	1.3	0.9	0.8	1.0

MA Division of Health Care Finance and Policy and the US Agency for Healthcare Research and Quality, 2006

Cost of Care [\(hide detail\)](#)

	Delta Community Hospital	Echo Teaching Hospital	Golf Ambulatory Care Center	Kilo Emergency Clinic	Lima Medical Center	State-wide Average
Median cost (lower is better)	\$6,000	\$10,000	\$8,000	\$7,000	\$9,500	\$8,000
High cost (seventy-fifth percentile)	\$9,000	\$15,000	\$12,000	\$10,500	\$14,250	\$12,000
Low cost (twenty-fifth percentile)	\$5,100	\$8,500	\$6,800	\$5,950	\$8,075	\$7,000

Massachusetts Health Care Quality and Cost Council health care claims dataset, 2007

Other Important Factors

	Delta Community Hospital	Echo Teaching Hospital	Golf Ambulatory Care Center	Kilo Emergency Clinic	Lima Medical Center	State-wide Average
Total number of patients (higher is better)	280	350	45	130	675	170
Percent of patients whose severity of						



Comparison of Providers

Start a New Search

Choose A Topic

Patient Safety
Patient Experience
Surgical Care

Bone and Joint Care

Back Procedure
Hip Fracture
Hip Replacement
Knee Replacement

Digestive System

Gall Bladder
Intestinal Surgery
Weight-loss Surgery

Heart Care

Angioplasty
Bypass Surgery
Heart Attack
Heart Failure
Heart Value Surgery
Stroke

Obstetrics

Cesarean Section
Normal Newborn
Vaginal Delivery

Respiratory

COPD
Pneumonia

Heart Care: Angioplasty

Quality and cost of angioplasty varies by hospital. The reason to know about this is that someday you, or someone you care about, may need to decide which hospital to go to for angioplasty. You can make a more informed choice when you know about quality and cost and then discuss this with your doctor.

Diagnostic classification: Angioplasty only (APR-DRG 174);
Angioplasty with heart attack, heart failure or shock (APR-DRG175)

Quality of Care

	Alpha Community Hospital	Beta Teaching Hospital	Delta Ambulatory Care Center	Omega Emergency Clinic	Theta Medical Center
	★★★★	★★★	★	★★★★	★
Number of Patients	456	455	76	98	120
Significance	not significant	significant	significant	not significant	not significant

Data provided by Massachusetts Data Analysis Center (Mass-DAC).

Cost of Care

	Alpha Community Hospital	Beta Teaching Hospital	Delta Ambulatory Care Center	Omega Emergency Clinic	Theta Medical Center
	\$\$\$	\$\$	\$\$\$	\$\$\$	\$\$
Significance	significant	significant	not significant	not significant	significant

d
r
a
f
t

Weight Loss Surgery

Heart Care

- Angioplasty
- Bypass Surgery
- Heart Attack
- Heart Failure
- Heart Valve Surgery
- Stroke

Obstetrics

- Cesarean Section
- Normal Newborn
- Vaginal Delivery

Respiratory

- COPD
- Pneumonia

Radiation Treatment

- Radiation Treatment

Outpatient Diagnostic Procedure

- Cardiac Testing
- CT Scan
- Mammogram
- MRI
- Ultrasound
- X-ray



Statistical Significance	Above Average Quality	Not Different from Average Quality	Below Average Quality	Above Average Quality	Below Average Quality

Data provided by Massachusetts Data Analysis Center (Mass-DAC).

Cost of Care

	Alpha Community Hospital	Beta Teaching Hospital	Delta Ambulatory Care Center	Omega Emergency Clinic	Theta Medical Center
	\$\$\$	\$	\$\$\$	\$\$\$	\$\$
Statistical Significance	Above Average Cost	Below Average Cost	Above Average Cost	Above Average Cost	Not Different from Average Cost

Alpha Community Hospital	Beta Teaching Hospital	Delta Ambulatory Care Center	Omega Emergency Clinic	Theta Medical Center
remove	remove	remove	remove	remove

Legend

- Hospitals have a rate in the bottom 15%. Their rate is worse than 85% of all hospitals in the state.
- Hospitals are below average, but not in bottom 15%. Their rate is above 15% but below 50% of all hospitals in the state.
- Hospitals perform better than average but are not in the top 15%. Their rate is above 50% but below 15% of all hospitals in the state.
- Hospitals have a rate in the top 15%. Their rate is better than 85% of all hospitals in the state.
- N/A Not enough information was reported.
- Above Average Quality Insert Text Here that explains what 'Above Average Quality' means.
- Below Average Quality Insert Text Here that explains what 'Below Average Quality' means.

Draft Legend Text - Quality

Quality of Care

- Above Average Quality: It is 95% certain that the hospital's performance is above the median state performance.
- Not Different from Average Quality: The hospital's performance is within the average range. Even if the hospital's score is high or low, it is not 95% certain that the hospital's performance is truly different from the median state performance.
- Below Average Quality: It is 95% certain that the hospital's performance is below the median state performance.

Draft Legend Text - Cost

Cost of Care

- Above Average Cost: It is 95% certain that the hospital's cost is above the median state cost.
- Not Different from Average Cost: The hospital's cost is within the average range. Even if the hospital's cost is high or low, it is not 95% certain that the hospital's cost is truly different from the median state cost.
- Below Average Cost: It is 95% certain that the hospital's cost is below the median state cost.

Today's Recommendation to Council

- Adopt Hybrid method and design as presented